

LUX MUNDI® LIQUID PARAFFIN & CANDLES

Guide for Preparing and Maintaining Your Liquid Candles



LUX MUNDI®
Liquid Paraffin & Candles



Getting Started

Lux Mundi Refillable and Shell Candles can be used with a variety of candlesticks and candle sockets. Sometimes these candles may need to be adapted to fit your candlestick. Lux Mundi has two options for this:

Thread Adapters

Every Lux Mundi candle comes with a 1/2-13 threaded hole on the base that can be screwed into the 1/2-13 threaded stud of a candlestick. If your candlestick has another threaded stud size, you can request thread adapters from your Lux Mundi dealer. These are available in the following thread sizes: 1/4-20, 10-24, 3/8-16, and 5/16-18.



1. *Screw your thread adapter into the 1/2-13 hole snug into the bottom of your candle.*



2. *Screw the candle onto the threaded stud of your candlestick.*

Nylon Socket Adapters

If you aren't screwing your candle into a threaded stud, Nylon Socket Adapters can be used to fit your candle into a socket of another size. The Nylon Socket Adapter can simply be screwed into the 1/2-13 threaded base of the candle and then placed into your candle socket.



1. *Screw your nylon socket adapter into the 1/2-13 threaded base of your candle.*



2. *Place candle into the socket.*

Lighting Refillable Candles for the First Time

Each Refillable Lux Mundi candle comes complete with a brass burner.



Unscrew the brass burner and pour Lux Mundi Pure Liquid Paraffin into the cavity of the candle. Your Lux Mundi dealer can provide a pump or spigot that may help with filling these candles from our 2.5 and 1 Gallon jugs of Pure Liquid Paraffin. **Do not fill the cavity more than 1" from the top;** filling beyond this point may cause liquid paraffin to overflow when the wick is re-inserted back into the candle.



Re-insert the wick into the candle and screw the brass burner on securely. Allow the wick to absorb the Pure Liquid Paraffin for at least two minutes before lighting.



A Bic Lighter is recommended to light your Lux Mundi candles. Once lit, the flame of the candle should be no more than 1" tall.

Do not adjust the height of the wick to create a larger flame.

Lighting Shell Candles for the First Time



Simply remove the plastic cap from the top of your disposable container, insert the container into the cavity of your Shell candle and light the wick.

Do not adjust the height of the wick to create a larger flame.

Maintaining and Replacing Your Refillable Candle Wick

The wicks on all Lux Mundi products are pre-set for the best performance of your candles. No more than 1/8" of the wick should be exposed on the top of a Refillable Candle. **Do not trim or adjust the height of these wicks;** doing so may affect the fuel consumption of the candle, create excess heat or soot, or reduce the life of your candle.

As you use your Refillable Candle, excess carbon may build up on the exposed portion of the wick. Simply wipe this off with a clean, soft cloth being careful not to pull out the wick. When used as recommended, wicks for Refillable Lux Mundi Candles may last up to about 1,000 hours. Replace your wicks before then, or when you notice the flame of the candle getting smaller.

Replacement wicks can be purchased through your Lux Mundi dealer. To replace the wick:



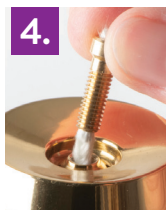
1. Remove the brass burner from the candle, being careful not to spill any liquid paraffin that might still be in the candle.



2. Unscrew the old wick from the brass burner.



3. Pull the long end of the new wick through the top of the burner using the hook provided in your pack of replacement wicks.



4. Screw the new wick back into the burner.

6" Replacement Wicks

Pack of 7 Wicks
Item LMW000007

- 7/8" Diam. (except 7/8" x 6")
- 1" Diam.
- 25 Hour Refillable Units
- 45 Hour Refillable Units
- 70 Hour Refillable Units

9" Replacement Wicks

Pack of 7 Wicks
Item LMW000007L

- 7/8 x 6"
- 1-1/8" Diam.
- 1-1/4" Diam.
- 1-1/2" Diam.
- 1-15/16" Diam.
- 2-1/2" Diam.
- 3" Diam.
- Refillable Sanctuary Candles

Cleaning and Caring for Your Candles

To keep your Lux Mundi candles clean, simply wash the nylon part of your candle with warm water and dish soap. Household cleaners like Fantastik or 409 may also be used if a more thorough cleaning is required. Be sure to remove the brass burner and empty any remaining Liquid Paraffin before cleaning Refillable Candles. Carefully clean around the metal or decal ornaments on Paschal Candles or Christ Candles so that you don't damage the finish on these elements.



1. Remove brass burner and empty any remaining Liquid Paraffin.



2. Wash the nylon part of your candle with warm water and dish soap.

Brass burners used with Refillable Candles and the decorative brass followers that can be used with Shell Candles are coated with a protective layer of clear lacquer. These parts can be cleaned with warm water and dish soap. A small amount of wax polish can also be used to help protect the lacquer finish. **The use of brass polish is not recommended with these parts as this could damage the lacquer finish.**



1. Clean brass burners and followers with warm water and dish soap.



2. Apply a small amount of wax polish to help protect the lacquer finish.

Refillable Candles



Lux Mundi® Refillable Candles come complete with a brass burner with wick that can be unscrewed so that Lux Mundi Pure Liquid Paraffin can be poured directly into the candle. These candles should only be used with Lux Mundi Pure Liquid Paraffin, which is specifically designed and packaged for liturgical use. Refillable candles are available in a range of diameters from 7/8" to 3".

Shell Candles



Lux Mundi Shell Candles are available in diameters ranging from 1-7/8" to 3-1/2" and are designed to be used with our convenient Lux Mundi Disposable containers. These can simply be dropped into the nylon shell and removed once all the Liquid Paraffin has been consumed. There is no need to worry about spilling Liquid Paraffin since this is entirely contained in the bottle.

LUX MUNDI®
Liquid Paraffin & Candles

